

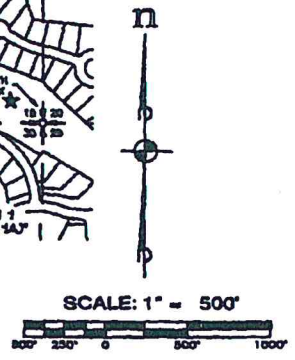
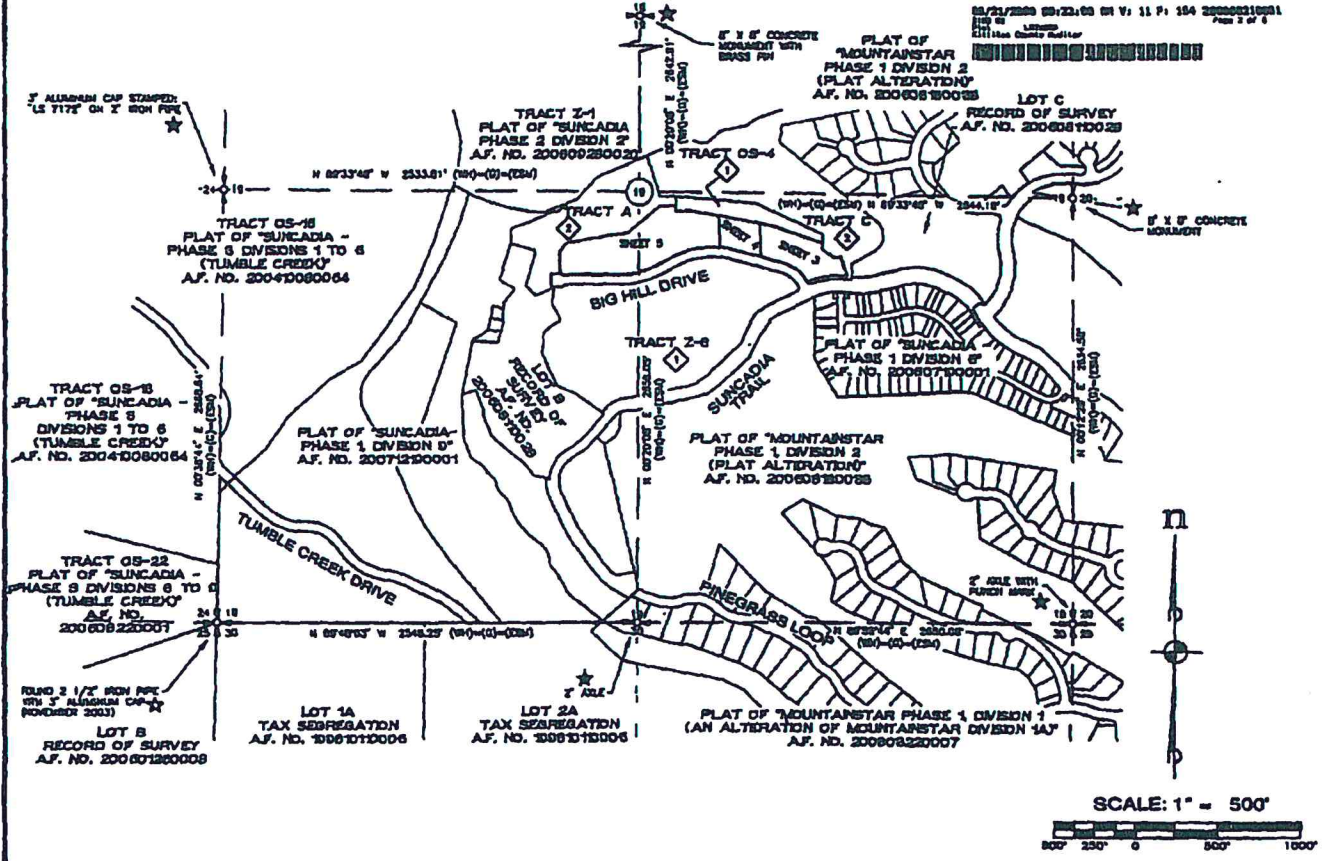
11-61

SUNCADIA - PHASE 1 DIVISION 13A

A PORTION OF SECTION 19, TOWNSHIP 20 NORTH, RANGE 15 EAST, W.M.
KITITAS COUNTY, WASHINGTON

AUDITOR'S FILE NO.
20080210001

10/21/2008 09:22:00 ON V: 11 P: 154 20080210001
Page 2 of 4



LEGEND

- (WM) BEARING AND/OR DISTANCE IS BASED UPON THE FIELD LOCATION OF THE FOUND CORNER AND THE COORDINATE POSITION ESTABLISHED BY WASH PACIFIC FOR MOUNTAINSTAR IN 2002.
- (EDM) BEARING AND/OR DISTANCE IS BASED UPON THE FIELD LOCATION OF THE FOUND CORNER AND/OR THE COORDINATE POSITION ESTABLISHED BY WASH PACIFIC FOR MOUNTAINSTAR IN 2002. EDM LOCATED THE EXISTING CORNER AS SHOWN IN 2003. EDM CONCLUDED WITH THE COORDINATE POSITION ESTABLISHED BY WASH PACIFIC AND ACCEPTED THEIR POSITION.
- ★ WASH PACIFIC FIELD LOCATED THE CORNER FOUND AT THIS LOCATION. EDM ACCEPTED THEIR POSITION.
- ☆ WASH PACIFIC FIELD LOCATED THE CORNER FOUND AT THIS LOCATION. EDM LOCATED THIS CORNER IN 2003. EDM CONCLUDED WITH THE COORDINATE POSITION ESTABLISHED BY WASH PACIFIC AND ACCEPTED THEIR POSITION.
- (V) BEARING AND/OR DISTANCE FROM THIS RECORD OF SURVEY BY GOLDMOUTH & ASSOCIATES AS RECORDED IN BOOK 30 OF SURVEYS, PAGES 104-107, UNDER AUDITOR'S FILE NO. 20040720003.
- ◇ PLAT OF "SUNCADIA - PHASE 1 DIVISION 1" A.F. NO. 20071310001
- RECORD OF SURVEY (BOUNDARY LINE ADJUSTMENT) A.F. NO. 20060300040

BASIS OF BEARINGS

WASHINGTON STATE PLANE COORDINATE SYSTEM SOUTH ZONE, NAD 83/11. PROJECT IS REFERENCED VIA GPS TO SIZE CONTROL POINTS "EASTON" (POI CORNER) AND "LOUIS" (POI CORNER). THE DISTANCES SHOWN HEREIN ARE GROUND DISTANCES. TO CONVERT TO GRID DISTANCES, MULTIPLY BY A CORRECTED AVERAGE SCALE FACTOR OF 0.9999937.

SURVEY INSTRUMENTATION

SURVEYING PERFORMED IN CONFORMANCE WITH THE RECORD OF SURVEY UTILIZED THE FOLLOWING EQUIPMENT AND PROCEDURES:

- 1" TOTAL STATION MAINTAINED TO MANUFACTURER'S SPECIFICATIONS AS REQUIRED BY WAC-333-130-100
- THREE DIM. FREQUENCY SURVEY GRADE GPS UNITS UTILIZING RAPD STATIC AND POST PROCESSING TECHNOLOGIES
- PROCEDURE USED: FIELD TRIANGULAR AND GPS WITH ACCURACY MEETING OR EXCEEDING THE REQUIREMENTS OF WAC-333-130-020



ESM CONSULTING ENGINEERS, LLC		FEDERAL WAY 114-114 114-114 114-114
65075 1st Way South 4500 Federal Way, WA 98003 www.esmcivil.com		
Civil Engineering Public Works	Land Surveying Project Management	Land Planning Landscape Architecture
DATE: 2008-02-05	JOB NO. 1282-008-007-0003	VOLUME/PAGE 11-61
DRAWN BY: W.D.O.	SHEET 2 OF 6	

11-165

SUNCADIA - PHASE 1 DIVISION 13A

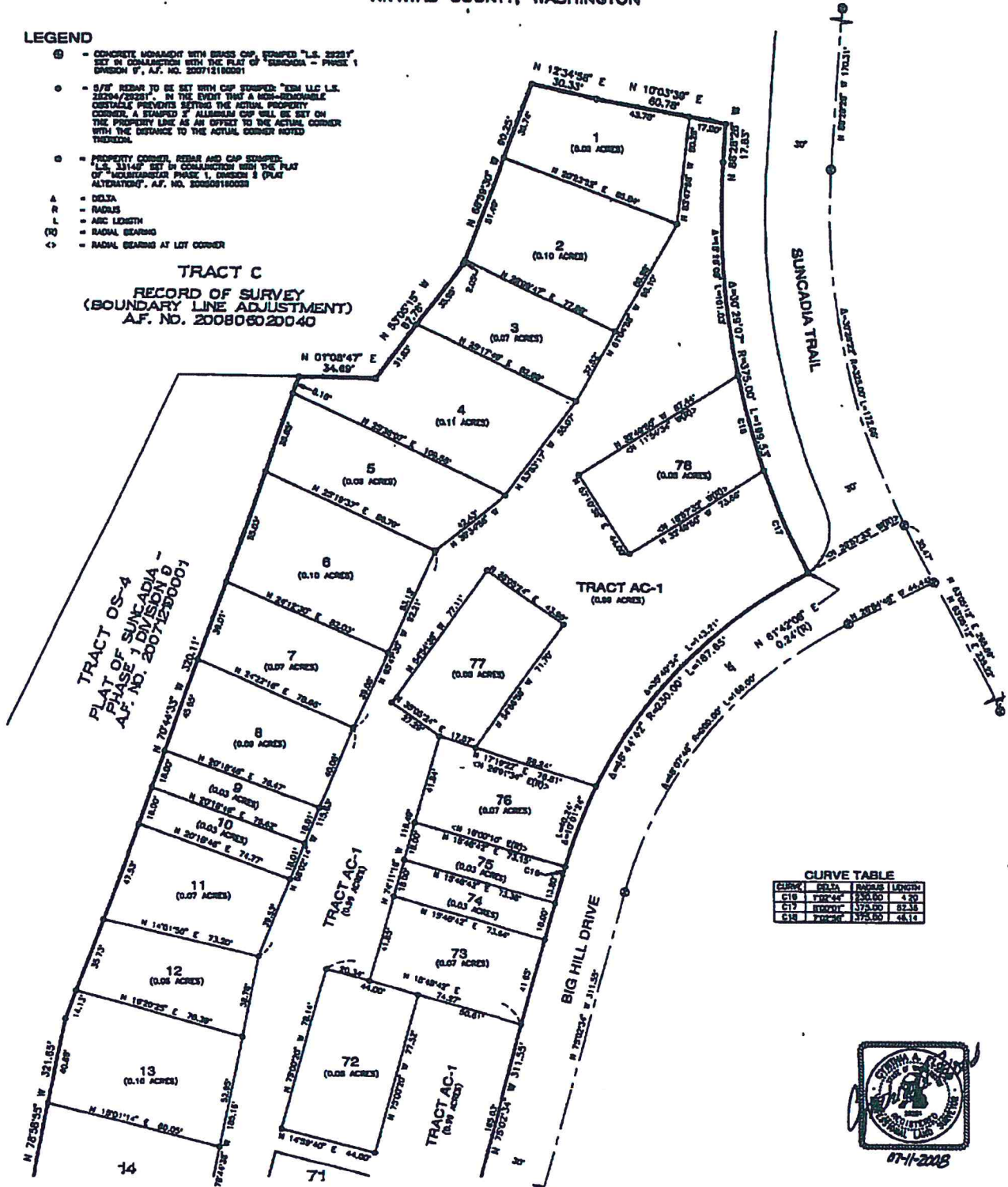
A PORTION OF SECTION 19, TOWNSHIP 20 NORTH, RANGE 15 EAST, W.M.
 KITTITAS COUNTY, WASHINGTON

AUDITOR'S FILE NO.
 20080620040

LEGEND

- ⊙ - CONCRETE MONUMENT WITH BRASS CAP, STAMPED "L.S. 20281" SET IN CONFORMANCE WITH THE PLAT OF "SUNCADIA - PHASE 1 DIVISION 1", A.F. NO. 20071210001
- - 3/4" REBAR TO BE SET WITH CAP STAMPED "ESM LLC L.S. 20281/20281". IN THE EVENT THAT A NON-RECOVERABLE OBSTACLE PREVENTS SETTING THE ACTUAL PROPERTY CORNER, A STAMPED "X" ALUMINUM CAP WILL BE SET ON THE PROPERTY LINE AS AN OFFSET TO THE ACTUAL CORNER WITH THE DISTANCE TO THE ACTUAL CORNER NOTED THEREON.
- ◊ - PROPERTY CORNER, REBAR AND CAP STAMPED "L.S. 23146" SET IN CONFORMANCE WITH THE PLAT OF "MOUNTAINVIEW PHASE 1, DIVISION 2 (PLAT ALTERNATIVE)", A.F. NO. 20060810000
- A - DECCA
- R - RADIAL
- L - ARC LENGTH
- (R) - RADIAL BEARING
- ↖ - RADIAL BEARING AT LOT CORNER

TRACT C
 RECORD OF SURVEY
 (BOUNDARY LINE ADJUSTMENT)
 A.F. NO. 20080620040

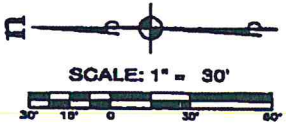


CURVE TABLE

CURVE	DETA	RADIUS	LENGTH
C16	170°45'	1250.00'	4.20'
C17	170°45'	1750.00'	62.38'
C18	170°45'	1750.00'	45.10'



SEE SHEET 4 OF 8



ESM CONSULTING ENGINEERS LLC
 33915 1st Way South 6200
 Federal Way, WA 98003
 www.esmcivil.com

Civil Engineering Public Works | Land Surveying Project Management | Land Planning Landscape Architecture

DATE: 2008-06-06 | JOB NO. 1262-009-007-0003
 DRAWN BY: W.D.D. | SHEET 3 OF 8

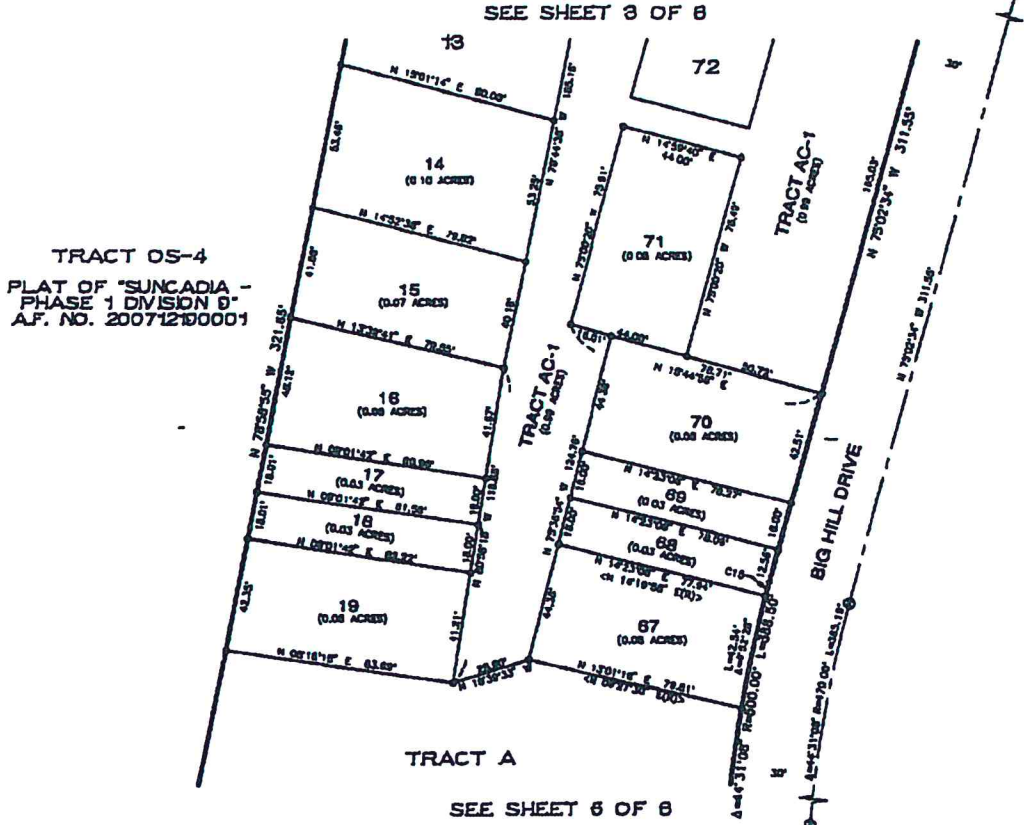
VOLUME/PAGE
 11-165

11-166

SUNCADIA - PHASE 1 DIVISION 13A
 A PORTION OF SECTION 19, TOWNSHIP 20 NORTH, RANGE 15 EAST, W.M.
 KITTITAS COUNTY, WASHINGTON

AUDITOR'S FILE NO.
200808210001

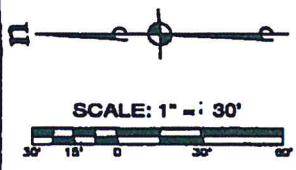
02/21/2008 09:23:00 AM V: 11 P: 100 200808210001
 ESM Consulting Engineers
 Page 4 of 4



CURVE TABLE

CURVE	DELTA	RADIUS	LENGTH
C18	67.72°	500.00	3.40

- LEGEND**
- ⊙ - CONCRETE MONUMENT WITH BRASS CAP, STAMPED "L.S. 2020" SET IN CONJUNCTION WITH THE PLAT OF "SUNCADIA - PHASE 1 DIVISION 9", A.F. NO. 20071210001
 - - 3/4" REBAR TO BE SET WITH CAP STAMPED "ESM LLC L.S. 2020/2021", IN THE EVENT THAT A NON-REMOVABLE OBSTACLE PREVENTS SETTING THE ACTUAL PROPERTY CORNER, A STAMPED 3" ALUMINUM CAP WILL BE SET ON THE PROPERTY LINE AS AN OFFSET TO THE ACTUAL CORNER WITH THE DISTANCE TO THE ACTUAL CORNER NOTED THEREON
 - A - DELTA
 - R - RADIUS
 - L - ARC LENGTH
 - (?) - RADIAL BEARING
 - <> - RADIAL BEARING AT LOT CORNER



ESM CONSULTING ENGINEERS, LLC
 33015 1st Way South 2000
 Federal Way, WA 98003

www.esmcivil.com

Civil Engineering Public Works | Land Surveying Project Management | Land Planning Landscape Architecture

DATE: 2008-08-05 | JOB NO. 1282-009-007-0003
 DRAWN BY: W.G.D. | SHEET 4 OF 6

VOLUME/PAGE
 11-166

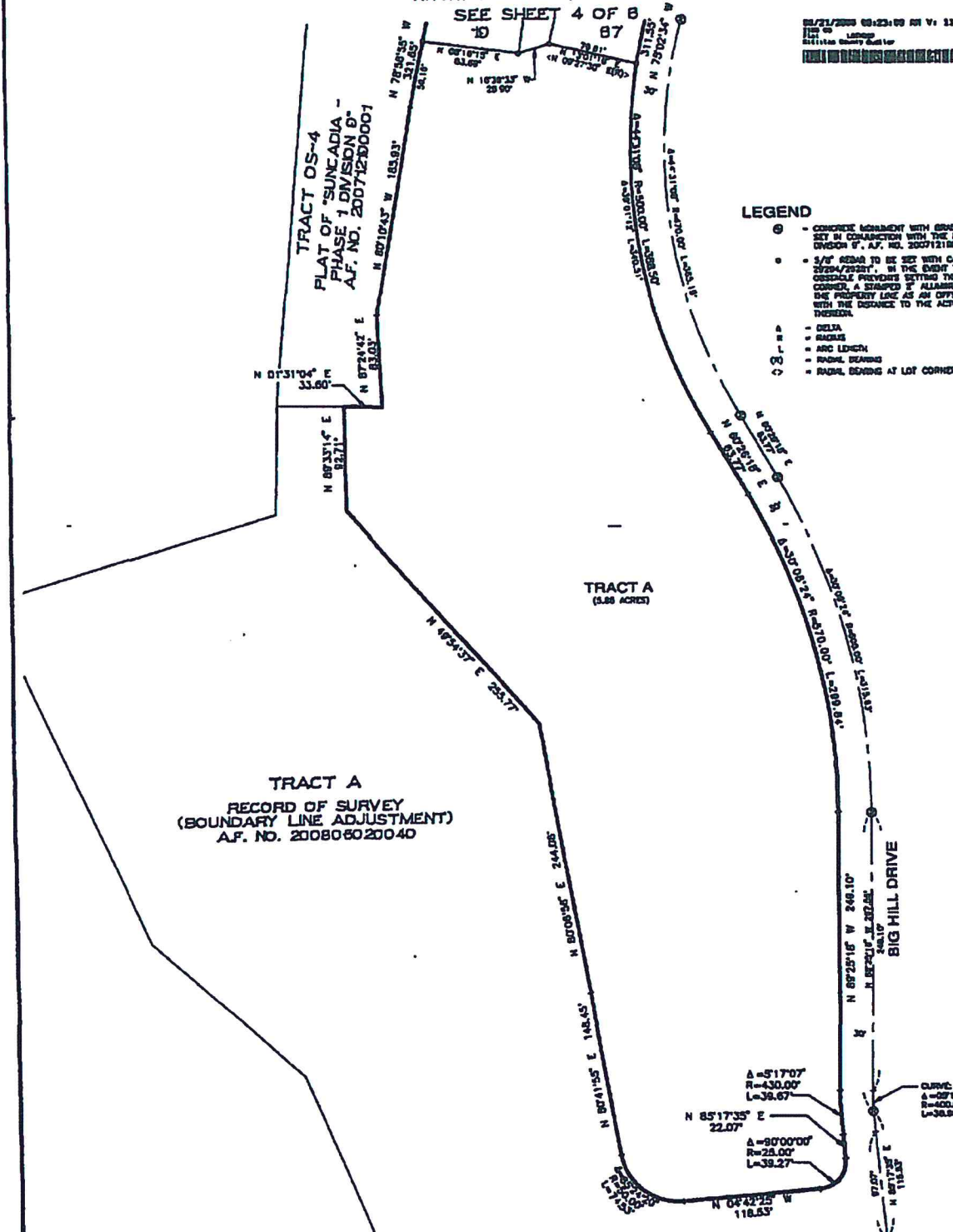
11-167

SUNCADIA - PHASE 1 DIVISION 13A

A PORTION OF SECTION 19, TOWNSHIP 20 NORTH, RANGE 15 EAST, W.M.
KITITITAS COUNTY, WASHINGTON

AUDITOR'S FILE NO.
200808210001

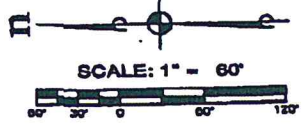
01/21/2008 09:23:00 AM V: 11 P: 107 200808210001
11 of 11
Landing
Billings County Data for
Page 5 of 6



LEGEND

- ⊙ - CONCRETE MONUMENT WITH BRASS CAP, STAMPED "L.S. 2928" SET IN CONJUNCTION WITH THE PLAT OF "SUNCADIA - PHASE 1 DIVISION 13A", A.F. NO. 200712180001
- ⊙ - 5/8" IRON PIPES TO BE SET WITH CAP STAMPED "ESM LLC L.S. 2929A/2929B", IN THE EVENT THAT A NON-RESPONSIBLE CROSSLAND FENCE IS SETTING THE ACTUAL PROPERTY CORNER, A STAMPED "I" ALUMINUM CAP WILL BE SET ON THE PROPERTY LINE AS AN OFFSET TO THE ACTUAL CORNER WITH THE DISTANCE TO THE ACTUAL CORNER NOTED THEREON.
- Δ - DELTA
- R - RADIUS
- L - ARC LENGTH
- — — - RADIAL BEARING
- ↻ - RADIAL BEARING AT LOT CORNER

TRACT A
RECORD OF SURVEY
(BOUNDARY LINE ADJUSTMENT)
A.F. NO. 200808020040



ESM CONSULTING ENGINEERS LLP		
3305 1st Way South #200 Federal Way, WA 98003		
www.esmcivil.com		
Civil Engineering Public Works	Land Management Project Management	Land Planning Landscape Architecture
DATE: 2008-07-11	JOB NO. 1283-008-007-0003	
DRAWN BY: W.D.D./D.L.R.	SHEET 5 OF 8	

VOLUME/PAGE
11-167